

## SDD-CCT series

Whole Family: SDD-xxxxx-CCT    DC- (xx= 12V 24V 48V)    [ 60W 96W 100W 120W 160W ]



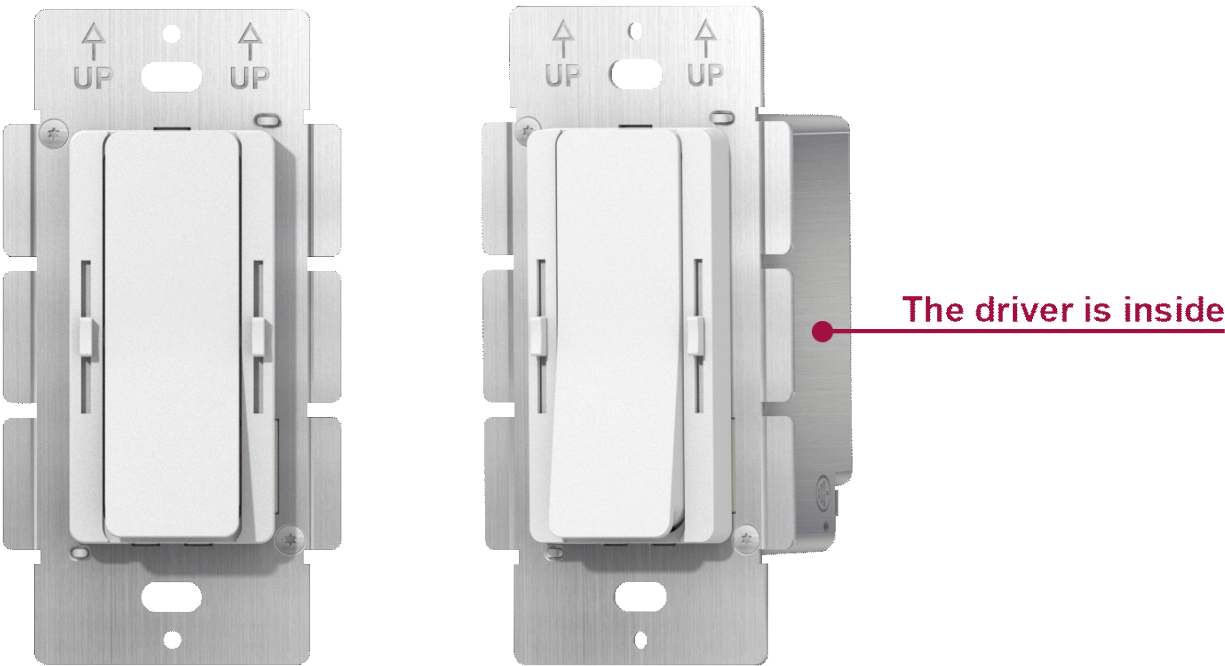
FC

Class P

SELV

RoHS

Reach



## Features

Output:	Constant Voltage
Input Range:	120VAC
PFC design:	Built-in active PFC function
Protections:	Short circuit/ Over load/ Over temperature
Heat dissipation:	Cooling by free air convection
Waterproof performance:	For dry and damp locations (US)
Design features:	1) Fine-tune Voltage slightly 2) Preset dimmer with on/off function 3) 3-Way switches 4) Dimming and color temperature adjustment function 5) Eliminated compatibility issues between drivers and switches
Dimming range:	0.3% -100%
Application:	Suitable for the application of LED lighting
Warranty:	5 years warranty
Others:	16KHZ PWM output with dimming curve is a gamma 2.2 curve    Flicker-free

# Driver+ Dimmer (2 in 1) LED Constant Voltage Driver    SDD-CCT series    120W    160W    PWM output

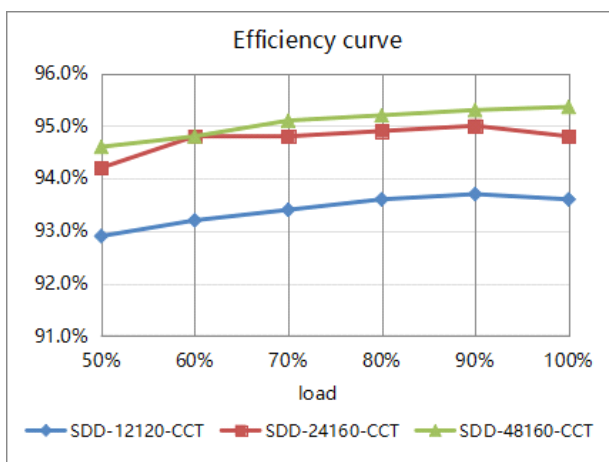
## Specification

Model		SDD-12120-CCT	SDD-24160-CCT	SDD-48160-CCT
Certificate		UL / cUL / FCC / Class P / SELV / RoHS / Reach		
Output	DC Rate Voltage	12V (12V-13.5V adjust by knob)	24V (24V-26V adjust by knob)	48V (48V-50V adjust by knob)
	Voltage Tolerance	±0.5V		
	Load Regulation	≤2%	≤1%	≤1%
	Line Regulation	≤0.5%		
	Rated current	10A	6.67A	3.33A
	Rated power	120W	160W	160W
	Voltage Ripple	3%	2%	1%
Input	Voltage Range	120VAC		
	Frequency Range	60Hz		
	Power Factor @ full load	0.99		
	THD (Typ.) @ full load	≤10%		
	Efficiency @ full load	93.3%	94.5%	95%
	AC Current (Max.)	1.1A	1.5A	1.5A
	Inrush Current (Typ.)	54A, 290us@ 50% I <sub>peak</sub>		
	Leakage current	< 0.5mA		
Protection	Short Circuit	Hiccup mode, recovers automatically after fault condition is removed		
	Over Load	≥110% Constant current mode, recovers automatically after fault condition is removed		
	Over temperature	Shell surface temperature 100℃ ±10℃ shutdown o/p voltage, automatically recover after cooling		
Environment	Working Temp.	-40~+60℃ (see below derating curve)		
	Working Humidity	20 - 95% RH non-condensing		
	Storage Temp., Humidity	-40 - +80℃, 10 - 95% RH non-condensing		
	Temp. coefficient	±0.03% /℃ (0 - 50℃)		
	Vibration	10~500Hz, 2G 12min./1 cycle, period for 72min. each along X,Y,Z axes		
Safety & EMC	Safety standards	UL8750 CAN/CSA-C22.2 No.250.13 9 (US)		
	Withstand voltage	I/P-0 /P:1.8KVAC I/P-F/G:1.8KVAC O/P-F/G:0.5KVAC (US)		
	Isolation resistance	I/P-0 /P:100M Ω / 500VDC / 25℃ / 70% RH		
	EMC Immunity	FCC/ICES do not request this test (US)		
	EMC Emission	FCC Part15 Subpart B ANSIC63.4 2014 (US)		
Others	Net Weight	0.27KG		
	Dimension	105*54*52mm / 4.134"x2.126"x2.047" (inch)		

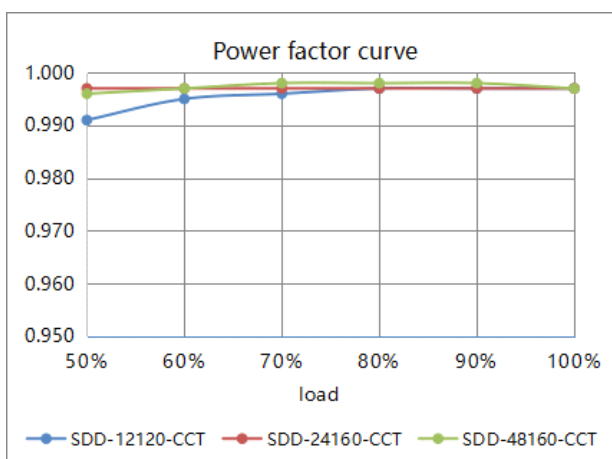
Driver+ Dimmer (2 in 1) LED Constant Voltage Driver    SDD-CCT series    120W    160W    PWM  
output

	Packing	
<b>Notes</b>	1. All parameters NOT specially mentioned are measured at 120VAC input, rated load and 25°C of ambient temperature. 2. Tolerance: includes setup tolerance and load regulation.	

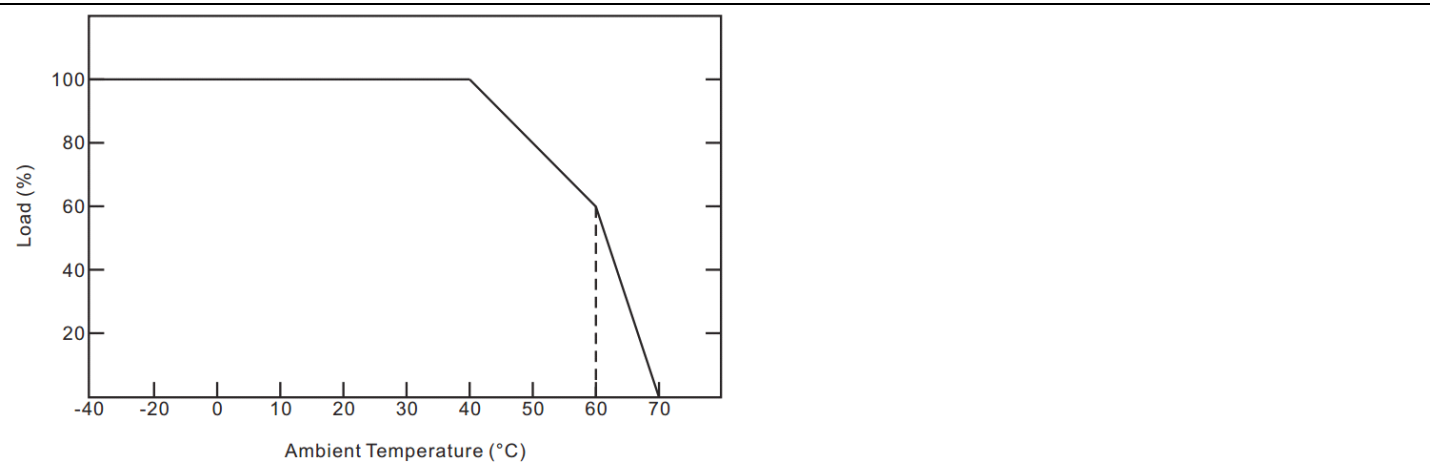
### Efficiency Curve (efficiency vs output load)



### Power factor curve

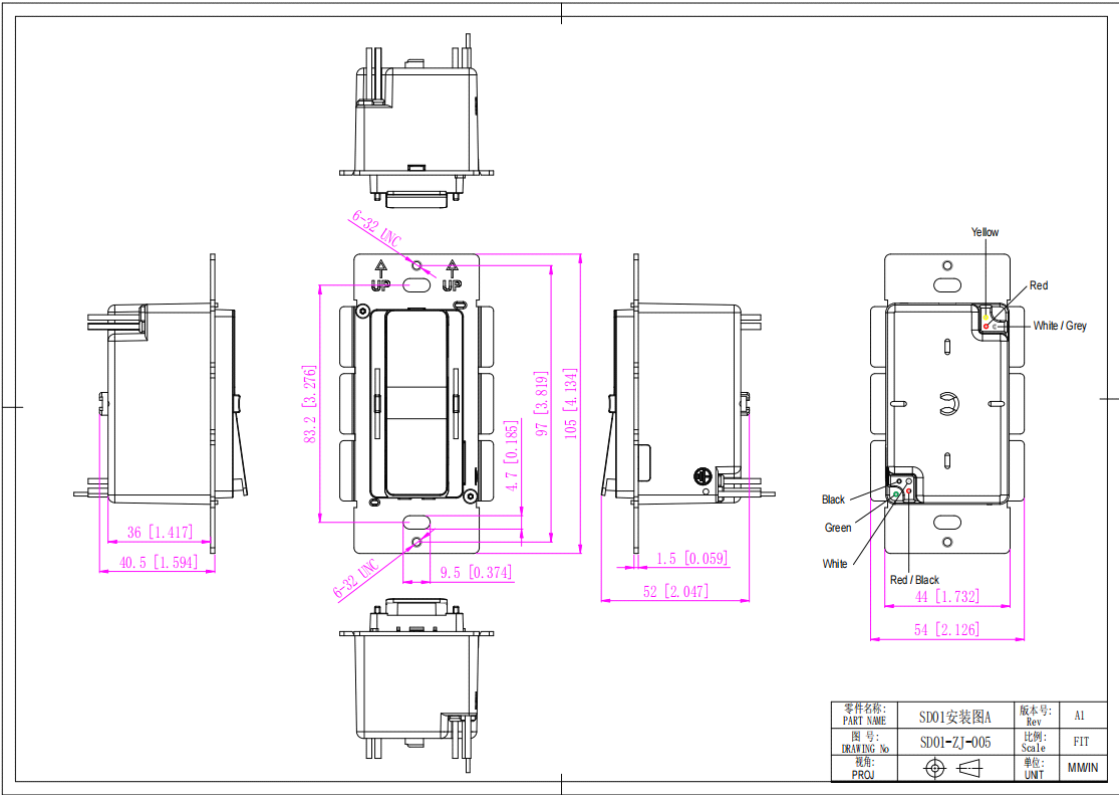


### Derating Curve (Output power VS Ambient TEM P)



1. To extend their life, please refer to the Derating Curve and derate according to the temperature.
2. The output current of the LED driver should be selected according to the rated current of the lamp and the ambient temperature.
- Normally, we recommend the power supply to reserve a certain amount of load to extend LED driver's life .

Mechanical Specification



American Wire Gauge SD01	
Input wires	Black cable (L), Red black cable (L1), White cable (N) and Green cable (FG) (4*18AWG)

Driver+ Dimmer (2 in 1) LED Constant Voltage Driver    SDD-CCT series    120W    160W    PWM  
output

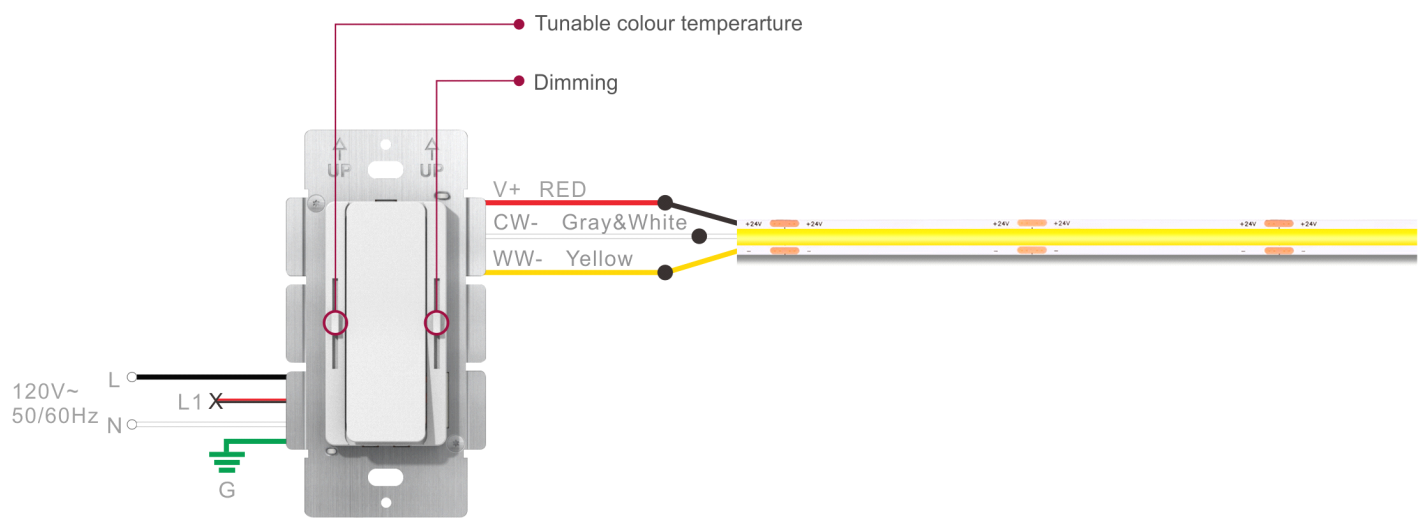
Output wires	Red cable (V+), White gray cable (CW -), Yellow cable (WW -)    (12V 3*16AWG, 24V/48V 3*18AWG)
--------------	--

Warm tips:

- 1. Any other requests for, we can customize.
- 2. Please ensure that the connection is correct.

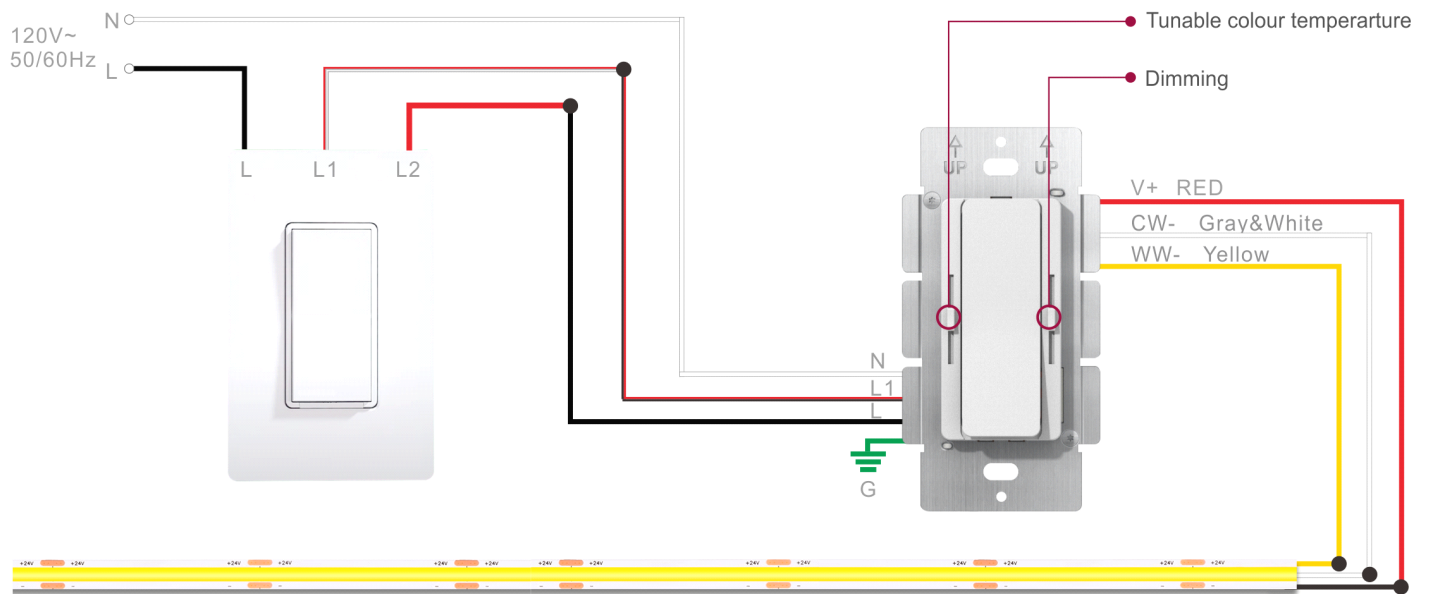
Connecting Diagram

① SDD-CCT model for standard dimming system



② SDD-CCT model for 3-way dimming system

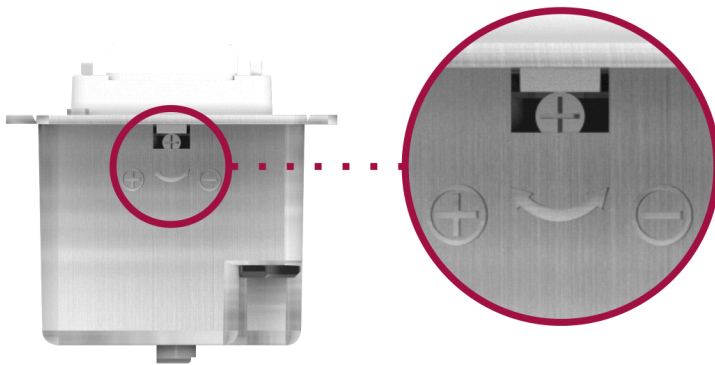
Driver+ Dimmer (2 in 1) LED Constant Voltage Driver SDD-CCT series 120W 160W PWM  
output



Note: Dimmer's panel is not replaceable.

## Knob to adjust the voltage

Clockwise rotation of the high voltage



### Output Volt. Adjustment

12V output volt. : 12-13.5V

24V output volt. : 24-26V

48V output volt. : 48-50V

## Instructions

1. This driver+dimmer 2 in 1 should be installed by qualified and professional person.
2. Please make sure the driver+dimmer 2 in 1 is installed with adequate ventilation around it to allow for heat dissipation.
3. Ensure that connection is correct to avoid LED light or driver+dimmer 2 in 1 be damaged.
4. If the driver+dimmer 2 in 1 cannot work normally, don't maintain privately.