

SDD-CCT series

Whole Family: SDD-xx100-CCT DC- (xx=24V 48V) [60W 96W 100W 120W 160W]



Class P SELV

RoHS



The driver is inside

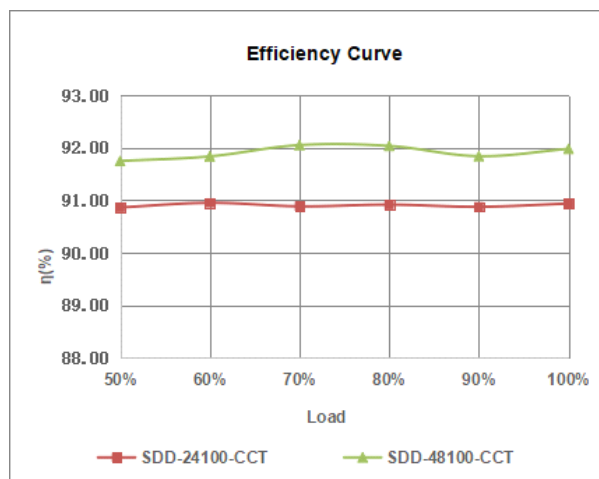
Features

Output:	Constant Voltage
Input Range:	120VAC
PFC design:	Built-in active PFC function
Protections:	Short circuit/ Over load/ Over temperature
Heat dissipation:	Cooling by free air convection
Waterproof performance:	For dry and damp locations (US)
Design features:	1) Fine-tune output voltage can be adjusted slightly 2) Preset dimmer with on/off switch 3) 3-Way switches 4) Dimming and color temperature adjustment function. 5) Eliminated compatibility issues between drivers and switches
Dimming range:	0.3% -100%
Application:	Suitable for the application of LED lighting
Warranty:	5 years warranty
Others:	16KHZ PWM output with dimming curve is a gamma 2.2 curve Flicker-free

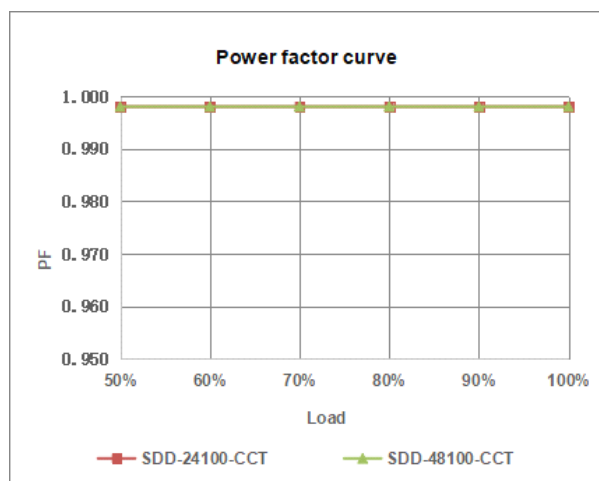
Specification

M o d e l		SDD-24100-CCT	SDD-48100-CCT
Certificate		UL / cUL / FCC / C l a s s P / SELV / RoHS / Reach	
Output	D C R a t e V o l t a g e	24V 24V-26V a d j u s t b y k n o b)	48V (48V-50V a d j u s t b y k n o b)
	V o l t a g e T o l e r a n c e	±0.5V	
	L o a d R e g u l a t i o n	≤1%	≤1%
	L i n e R e g u l a t i o n	≤0.5%	
	R a t e d c u r r e n t	4.17A	2.08A
	R a t e d p o w e r	100W	100W
Input	V o l t a g e R a n g e	120VAC	
	F r e q u e n c y R a n g e	60H z	
	P o w e r F a c t o r @ f u l l l o a d	≥0.99	
	T H D (T y p .) @ f u l l l o a d	≤10%	
	E f f i c i e n c y @ f u l l l o a d	91.0%	92.0%
	A C C u r r e n t (M a x .)	0.93A	0.93A
	I n r u s h C u r r e n t (T y p .)	50A, 150us@ 50% I _{peak}	
	L e a k a g e c u r r e n t	< 0.5m A	
Protection	Short C i r c u i t	H i c c u p m o d e , r e c o v e r s a u t o m a t i c a l l y a f t e r f a u l t c o n d i t i o n i s r e m o v e d	
	O v e r L o a d	≥110% C o n s t a n t c u r r e n t m o d e , r e c o v e r s a u t o m a t i c a l l y a f t e r f a u l t c o n d i t i o n i s r e m o v e d	
	O v e r t e m p e r a t u r e	S h e l l s u r f a c e t e m p e r a t u r e 100℃ ±10℃ s h u t d o w n o / p v o l t a g e , a u t o m a t i c a l l y r e c o v e r a f t e r c o o l i n g	
Environm e n t	W o r k i n g T E M P .	-40~+60℃ (see b e l o w d e r a t i n g c u r v e)	
	W o r k i n g H u m i d i t y	20 - 95% RH n o n - c o n d e n s i n g	
	S t o r a g e T E M , H u m i d i t y	-40 - +80℃, 10 - 95% RH n o n - c o n d e n s i n g	
	T E M P . c o e f f i c i e n t	±0.03% /℃ (0 - 50℃)	
	V i b r a t i o n	10~500Hz, 2G 12m i n . / 1 c y c l e , p e r i o d f o r 72 m i n . e a c h a l o n g X, Y, Z a x e s	
Safety & E M C	S a f e t y s t a n d a r d s	UL8750 C A N / C S A - C 2 2 . 2 N o . 2 5 0 . 1 3 (U S)	
	W i t h s t a n d v o l t a g e	I / P - O / P : 1.8KVAC I / P - F / G : 1.8KVAC O / P - F / G : 0.5KVAC (U S)	
	I s o l a t i o n r e s i s t a n c e	I / P - O / P : 100M Ω / 500VDC / 25℃ / 70% RH	
	E M C I m m u n i t y	FCC / ICES d o n o t r e q u e s t t h i s t e s t (U S)	
	E M C E m i s s i o n	FCC P a r t 1 5 S u b p a r t B A N S I C 6 3 . 4 2 0 1 4 (U S)	
O t h e r s	N e t W e i g h t	0.25KG	
	D i m e n s i o n	105*54*51m m / 4.134"x2.126"x1.996" (I n c h)	
	P a c k i n g		
Notes	1. A l l p a r a m e t e r s N O T s p e c i a l l y m e n t i o n e d a r e m e a s u r e d a t 120VAC i n p u t , r a t e d l o a d a n d 25℃ o f a m b i e n t t e m p e r a t u r e . 2. T o l e r a n c e : i n c l u d e s s e t u p t o l e r a n c e a n d l o a d r e g u l a t i o n .		

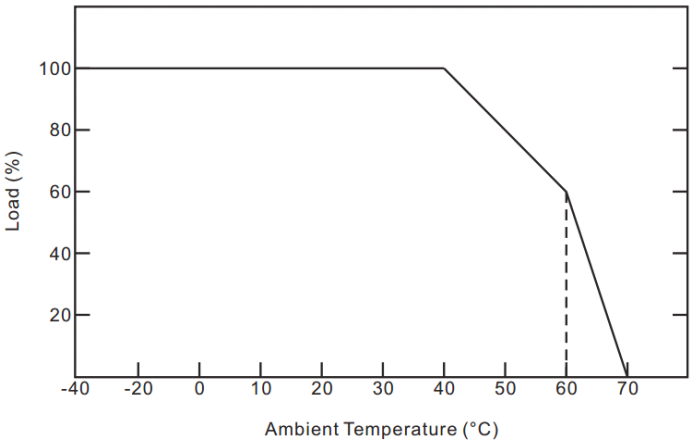
Efficiency Curve (efficiency vs output load)



Power factor curve

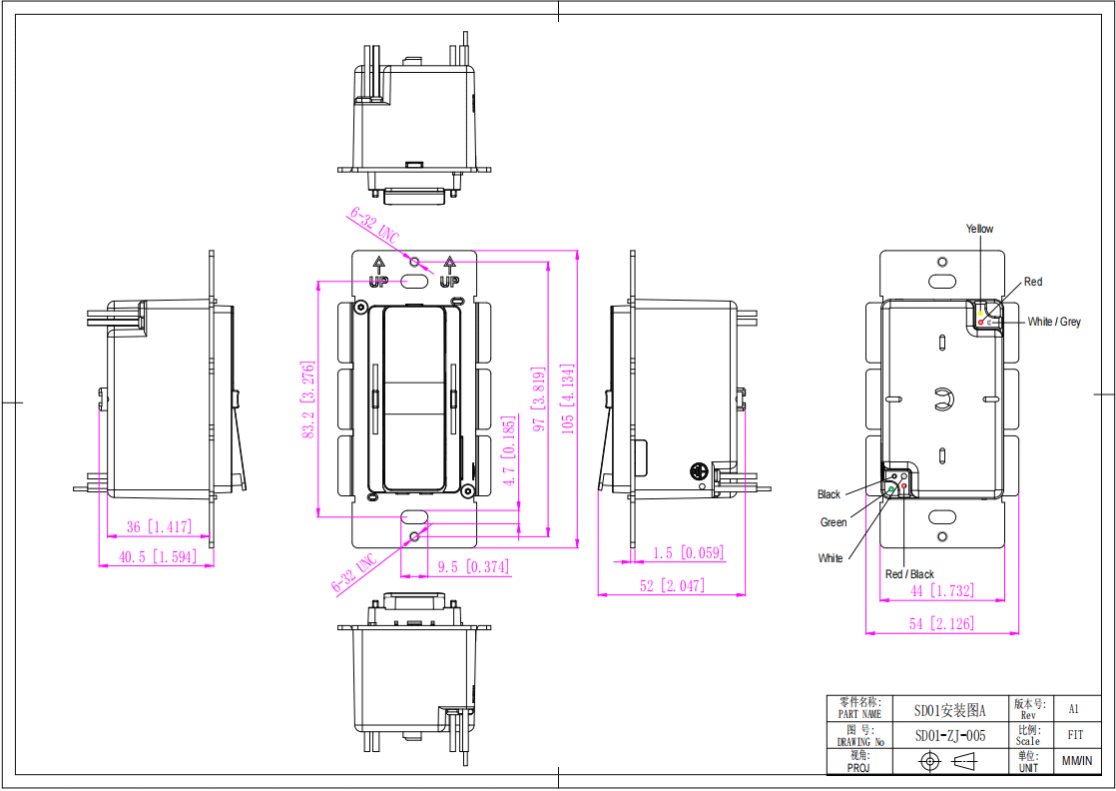


Derating Curve (Output power VS Ambient TEM P)



- 1. To extend their life, please refer to the Derating Curve and derate according to the temperature.
 - 2. The output current of the LED driver should be selected according to the rated current of the lamp and the ambient temperature.
- Normally, we recommend the power supply to reserve a certain amount of load to extend LED driver's life .

M echanicalSpecification



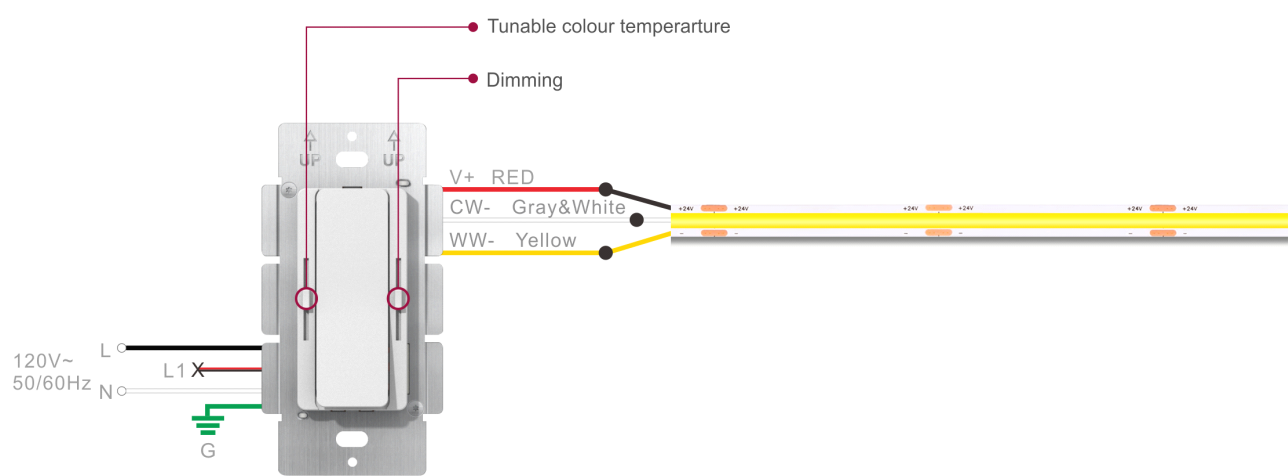
Am erican W ire Gauge SD01	
Inputwires	Black cable (L), Red black cable (L1), W hite cable (N) and Green cable (FG) (4*18AW G)
Outputwires	Red cable (V+),W hite/Gray cable (CW -),Yellow cable (WW -) (3*18AW G)

W arm tips :

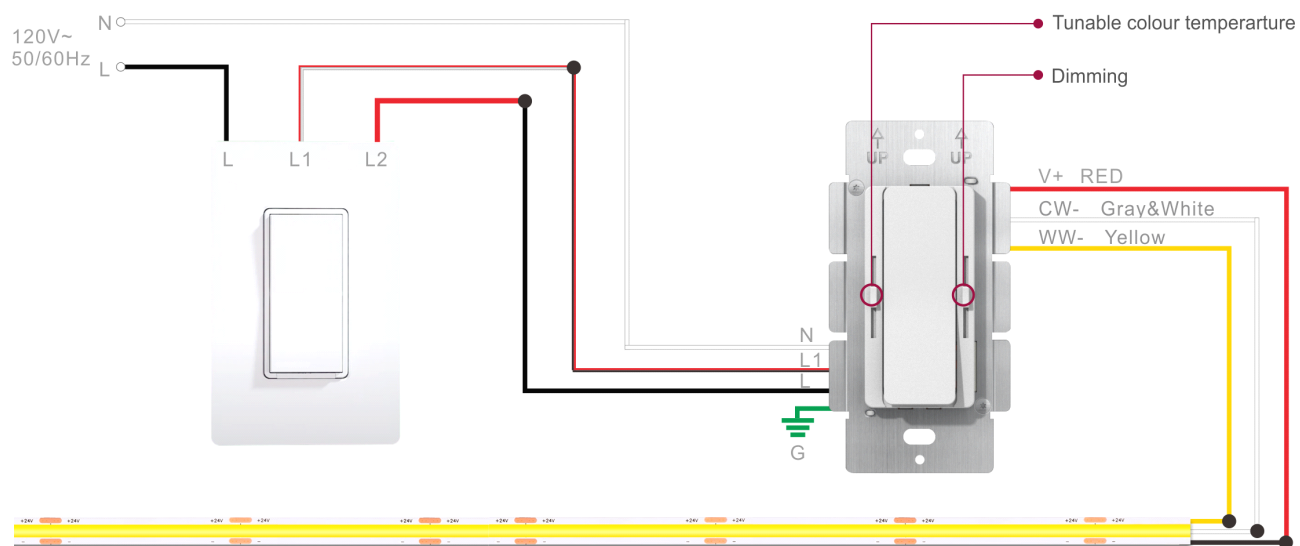
- 1. Any other requests, we can custom ize.
- 2. Please ensure that the connection is correct.

Connecting Diagram

① SDD-CCT model for standard dimming system

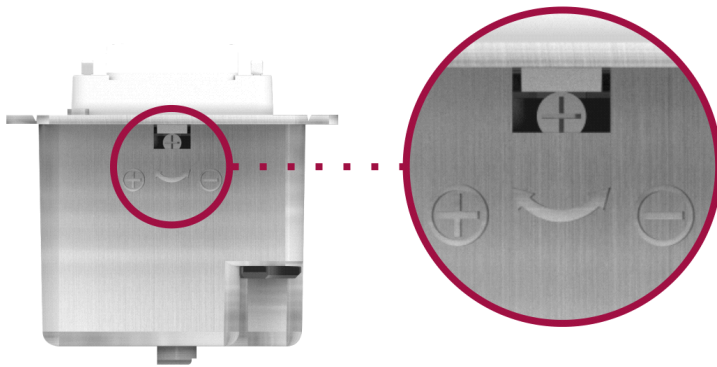


② SDD-CCT model for 3-way dimming system



Note: Dimmer's panel is not replaceable.

Knob to adjust the voltage



Output Volt. Adjustment

12V output volt. : 12-13.5V

24V output volt. : 24-26V

48V output volt. : 48-50V

Clockwise rotation of the high voltage

Instructions

1. This driver+dimmer 2 in 1 should be installed by qualified and professional person.
2. Please make sure the driver+dimmer 2 in 1 is installed with adequate ventilation around it to allow for heat dissipation.
3. Ensure that connection is correct to avoid LED light or driver+dimmer 2 in 1 be damaged.
4. If the driver+dimmer 2 in 1 cannot work normally, don't maintain privately.