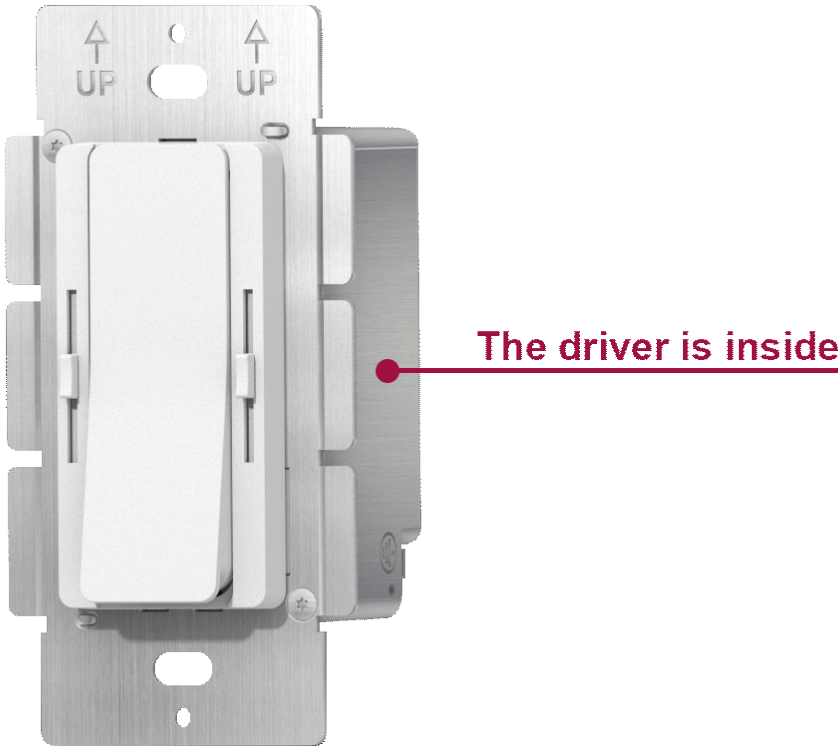


SDD-CCT series

Whole Family: SDD-xx096-CCT DC- (xx=24V 48V) [60W 96W 100W 120W 160W]



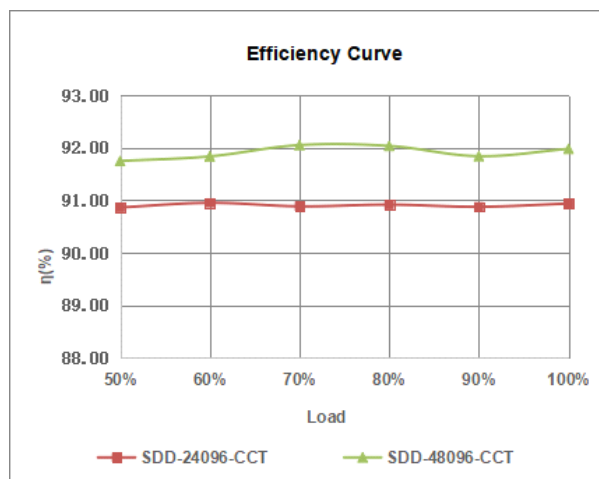
Features

Output:	Constant Voltage		
Input Range:	120VAC		
PFC design:	Built-in active PFC function		
Protections:	Short circuit/ Over load/ Over temperature		
Heat dissipation:	Cooling by free air convection		
Waterproof performance:	For dry and damp locations (US)		
Design features:	1) Fine-tune output voltage can be adjusted slightly 2) Preset dimmer with on/off switch 3) 3-Way switches 4) Dimming and color temperature adjustment function. 5) Eliminated compatibility issues between drivers and switches		
Dimming range:	0.3% -100%		
Application:	Suitable for the application of LED lighting		
Warranty:	5 years warranty		
Others:	16KHZ PWM output with dimming curve is a gamma 2.2 curve		Flicker-free

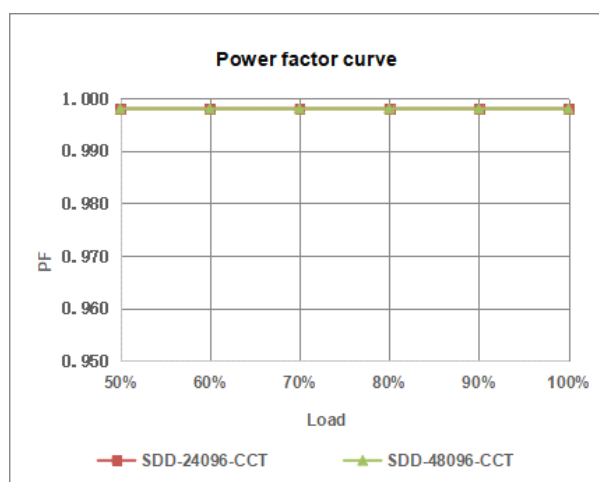
Specification

M o d e l		SDD-24096-CCT	SDD-48096-CCT
Certificate		UL / cUL / FCC / C l a s s P / SELV / RoHS / Reach	
O u t p u t	DC Rate Voltage	24V 24V-26V a d j u s t b y knob)	48V (48V-50V a d j u s t b y knob)
	V o l t a g e T o l e r a n c e	±0.5V	
	L o a d R e g u l a t i o n	≤1%	≤1%
	L i n e R e g u l a t i o n	≤0.5%	
	R a t e d c u r r e n t	4A	2A
	R a t e d p o w e r	96W	96W
I n p u t	V o l t a g e R a n g e	120VAC	
	F r e q u e n c y R a n g e	60H z	
	P o w e r F a c t o r @ f u l l l o a d	≥0.99	
	T H D (T y p .) @ f u l l l o a d	≤10%	
	E f f i c i e n c y @ f u l l l o a d	91.0%	92.0%
	A C C u r r e n t (M a x .)	0.9A	0.9A
	I n r u s h C u r r e n t (T y p .)	50A, 150us@ 50% I _{peak}	
	L e a k a g e c u r r e n t	< 0.5m A	
P r o t e c t i o n	Short C i r c u i t	H i c c u p m o d e, r e c o v e r s a u t o m a t i c a l l y a f t e r f a u l t c o n d i t i o n i s r e m o v e d	
	O v e r L o a d	≥110% C o n s t a n t c u r r e n t m o d e, r e c o v e r s a u t o m a t i c a l l y a f t e r f a u l t c o n d i t i o n i s r e m o v e d	
	O v e r t e m p e r a t u r e	S h e l l s u r f a c e t e m p e r a t u r e 100℃ ±10℃ s h u t d o w n o / p v o l t a g e, a u t o m a t i c a l l y r e c o v e r a f t e r c o o l i n g	
E n v i r o n m e n t	W o r k i n g T E M P .	-40~+60℃ (see b e l o w d e r a t i n g c u r v e)	
	W o r k i n g H u m i d i t y	20 - 95% RH n o n - c o n d e n s i n g	
	S t o r a g e T E M ., H u m i d i t y	-40 - +80℃, 10 - 95% RH n o n - c o n d e n s i n g	
	T E M P . c o e f f i c i e n t	±0.03% /℃ (0 - 50℃)	
	V i b r a t i o n	10~500H z, 2G 12m i n./1 c y c l e, p e r i o d f o r 72 m i n. e a c h a l o n g X, Y, Z a x e s	
S a f e t y & E M C	S a f e t y s t a n d a r d s	UL8750 C A N / C S A - C 2 2 . 2 N o . 2 5 0 . 1 3 (U S)	
	W i t h s t a n d v o l t a g e	I/P-O /P:1.8KVAC I/P-F/G :1.8KVAC O /P-F/G 0.5KVAC (U S)	
	I s o l a t i o n r e s i s t a n c e	I/P-O /P:100M Ω / 500VDC / 25℃ / 70% RH	
	E M C I m m u n i t y	FCC/ICES d o n o t r e q u e s t t h i s t e s t (U S)	
	E M C E m i s s i o n	FCC P a r t 1 5 S u b p a r t B A N S I C 6 3 . 4 2 0 1 4 (U S)	
O t h e r s	N e t W e i g h t	0.25KG	
	D i m e n s i o n	105*54*51m m / 4.134"x2.126"x1.996" (I n c h)	
	P a c k i n g		
N o t e s	1. A l l p a r a m e t e r s N O T s p e c i a l l y m e n t i o n e d a r e m e a s u r e d a t 120VAC i n p u t, r a t e d l o a d a n d 25℃ o f a m b i e n t t e m p e r a t u r e.		
	2. T o l e r a n c e : i n c l u d e s s e t u p t o l e r a n c e a n d l o a d r e g u l a t i o n .		

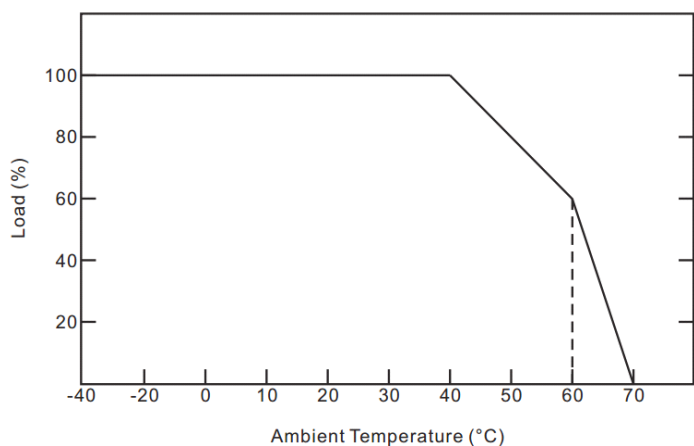
Efficiency Curve (efficiency vs output load)



Power factor curve

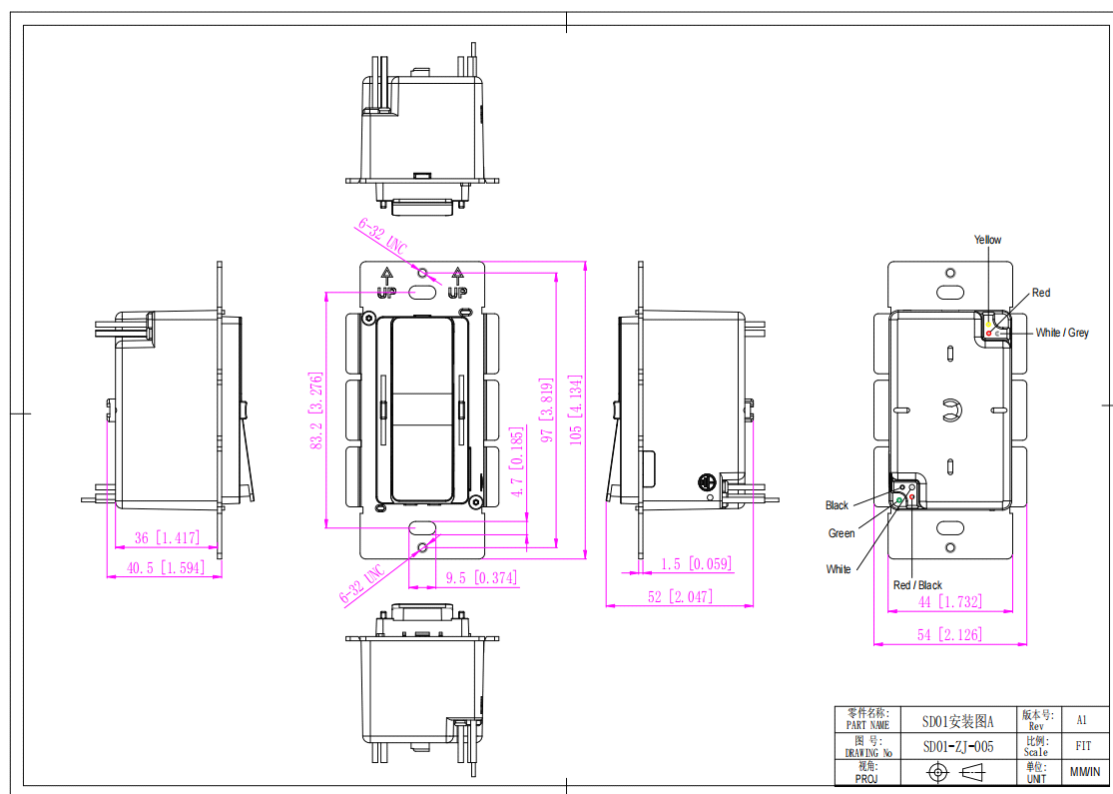


Derating Curve (Output power VS Ambient TEM P)



1. To extend their life, please refer to the Derating Curve and derate according to the temperature.
 2. The output current of the LED driver should be selected according to the rated current of the lamp and the ambient temperature.
- Normally, we recommend the power supply to reserve a certain amount of load to extend LED driver's life.

Mechanical Specification



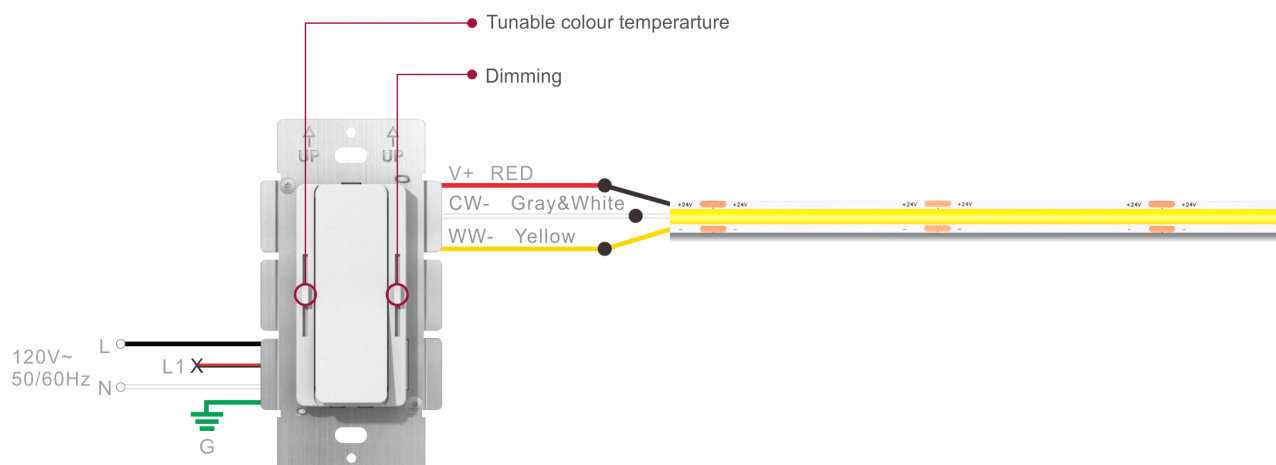
Am erican W ire Gauge SD01	
Input w ires	Black cable (L), Red black cable (L1) , W hite cable (N) and Green cable (FG) (4*18AW G)
O utput w ires	Red cable (V+),W hite/Gray cable (CW -),Yellow cable (W W -) (3*18AW G)

Warm tips :

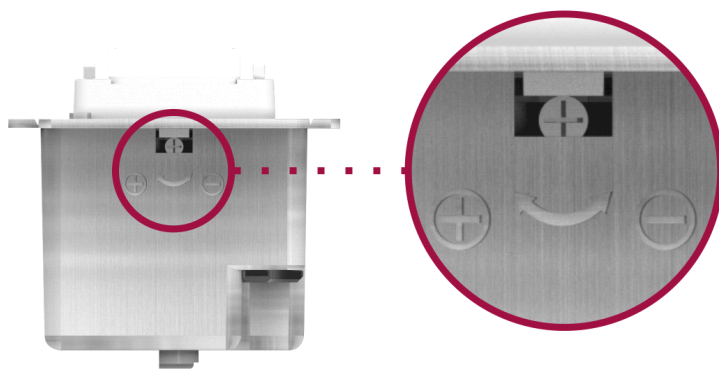
1. Any other requests, we can customize.
2. Please ensure that the connection is correct.

Connecting Diagram

① SDD-CCT model for standard dimming system



② SDD-CCT model for 3-way dimming system

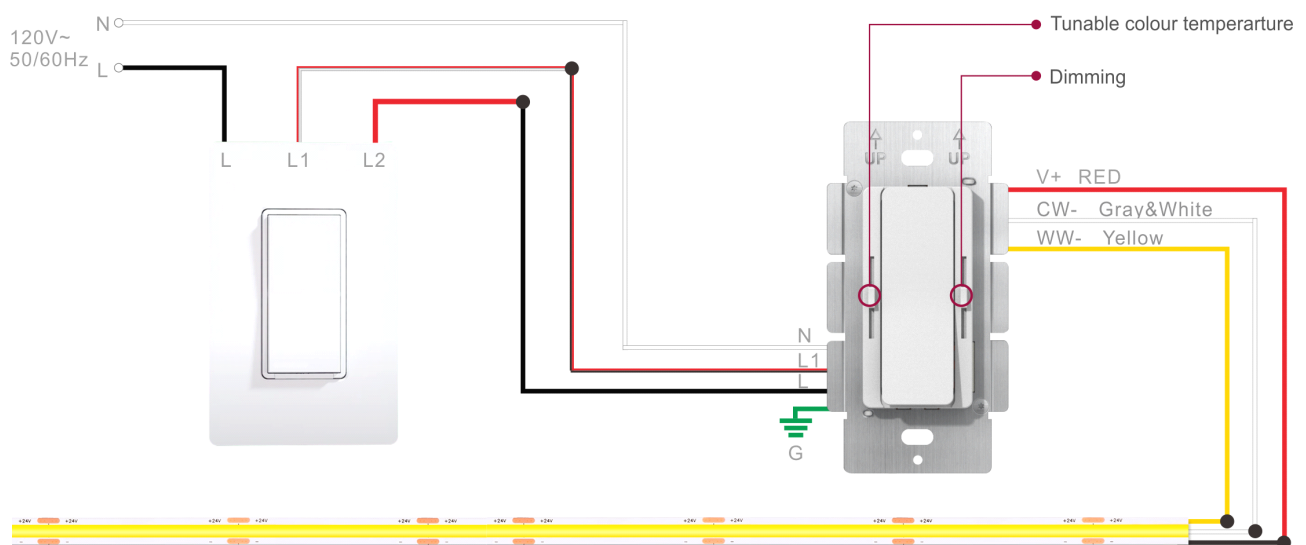


Output Volt. Adjustment

12V output volt. : 12-13.5V

24V output volt. : 24-26V

48V output volt. : 48-50V



Note: Dimmer's panel is not replaceable. Knob to adjust the voltage

Clockwise rotation of the high voltage

Instructions

1. This driver+dimmer2 in 1 should be installed by qualified and professional person.
2. Please make sure the driver+dimmer2 in 1 is installed with adequate ventilation around it to allow for heat dissipation.
3. Ensure that connection is correct to avoid LED light or driver+dimmer2 in 1 be damaged.
4. If the driver+dimmer2 in 1 cannot work normally, don't maintain privately.