

SDD-DIM series

Whole Family: SDD-xx096-DIM DC-(xx=12V 24V 48V) [60W 96W 100W 120W 160W]



Class 2

Class P

SELV

RoHS



The driver is inside

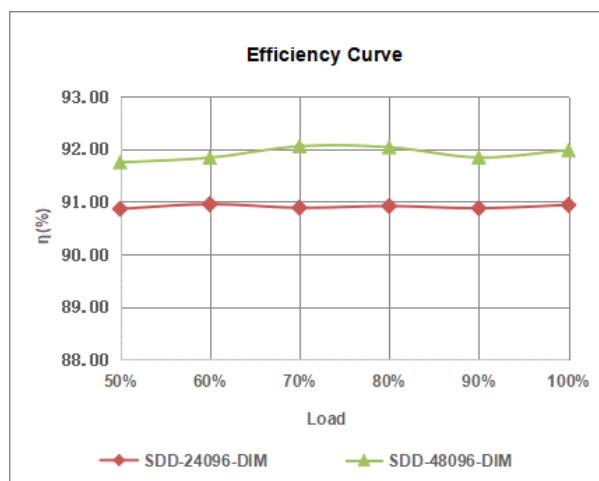
Features

Output:	Constant Voltage
Input Range:	120VAC
PFC design:	Built-in active PFC function
Protections:	Short circuit/ Over load/ Over temperature
Heat dissipation:	Cooling by free air convection
Waterproof performance:	For dry and damp locations (US)
Design features:	1) Fine-tune output voltage can be adjusted slightly 2) Preset dimmer with on/off switch 3) 3-Way switches 4) Eliminated compatibility issues between drivers and switches
Dimming range:	0.3% -100%
Application:	Suitable for the application of LED lighting
Warranty:	5 years warranty
Others:	16KHZ PWM output with dimming curve is a gamma 2.2 curve Flicker-free

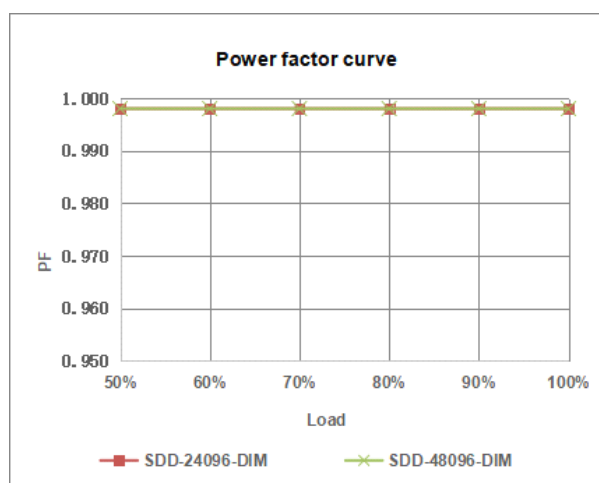
Specification

M o d e l		SDD -24096-D M	SDD -48096-D M
Certificate		UL / cUL / FCC / C l a s s P / SELV / RoHS / Reach	
Output	D C R a t e V o l t a g e	24V 24V-26V a d j u s t b y k n o b)	48V (48V-50V a d j u s t b y k n o b)
	V o l t a g e T o l e r a n c e	±0.5V	
	L o a d R e g u l a t i o n	≤1%	≤1%
	L i n e R e g u l a t i o n	≤0.5%	
	R a t e d c u r r e n t	4A	2A
	R a t e d p o w e r	96W	96W
Input	V o l t a g e R a n g e	120VAC	
	F r e q u e n c y R a n g e	60H z	
	P o w e r F a c t o r @ f u l l l o a d	≥0.99	
	T H D (T y p .) @ f u l l l o a d	≤10%	
	E f f i c i e n c y @ f u l l l o a d	91.0%	92.0%
	A C C u r r e n t (M a x .)	0.9A	0.9A
	I n r u s h C u r r e n t (T y p .)	50A, 150us@ 50% I _{peak}	
	L e a k a g e c u r r e n t	< 0.5m A	
Protection	Short C i r c u i t	H i c c u p m o d e, r e c o v e r s a u t o m a t i c a l l y a f t e r f a u l t c o n d i t i o n i s r e m o v e d	
	O v e r L o a d	≥110% C o n s t a n t c u r r e n t m o d e, r e c o v e r s a u t o m a t i c a l l y a f t e r f a u l t c o n d i t i o n i s r e m o v e d	
	O v e r t e m p e r a t u r e	S h e l l s u r f a c e t e m p e r a t u r e 100℃ ±10℃ s h u t d o w n o / p v o l t a g e, a u t o m a t i c a l l y r e c o v e r a f t e r c o o l i n g	
Environm e n t	W o r k i n g T E M P .	-40~+60℃ (s e e b e l o w d e r a t i n g c u r v e)	
	W o r k i n g H u m i d i t y	20 - 95% RH n o n - c o n d e n s i n g	
	S t o r a g e T E M ., H u m i d i t y	-40 - +80℃, 10 - 95% RH n o n - c o n d e n s i n g	
	T E M P . c o e f f i c i e n t	±0.03% /℃ (0 - 50℃)	
	V i b r a t i o n	10~500H z, 2G 12m i n ./1 c y c l e, p e r i o d f o r 72 m i n . e a c h a l o n g X, Y, Z a x e s	
Safety & E M C	S a f e t y s t a n d a r d s	UL8750 C A N / C S A - C 2 2 . 2 N o . 2 5 0 . 1 3 (U S)	
	W i t h s t a n d v o l t a g e	I / P - O / P : 1.8K V A C I / P - F / G : 1.8K V A C O / P - F / G 0.5K V A C (U S)	
	I s o l a t i o n r e s i s t a n c e	I / P - O / P : 100M Ω / 500V D C / 25℃ / 70% RH	
	E M C I m m u n i t y	F C C / C E S d o n o t r e q u e s t t h i s t e s t (U S)	
	E M C E m i s s i o n	F C C P a r t 1 5 S u b p a r t B A N S I C 6 3 . 4 2 0 1 4 (U S)	
O t h e r s	N e t W e i g h t	0.25KG	
	D i m e n s i o n	105*54*51m m / 4.134"x2.126"x1.996" (I n c h)	
	P a c k i n g		
Notes	1. A l l p a r a m e t e r s N O T s p e c i a l l y m e n t i o n e d a r e m e a s u r e d a t 120VAC i n p u t, r a t e d l o a d a n d 25℃ o f a m b i e n t t e m p e r a t u r e .		
	2. T o l e r a n c e : i n c l u d e s s e t u p t o l e r a n c e a n d l o a d r e g u l a t i o n .		

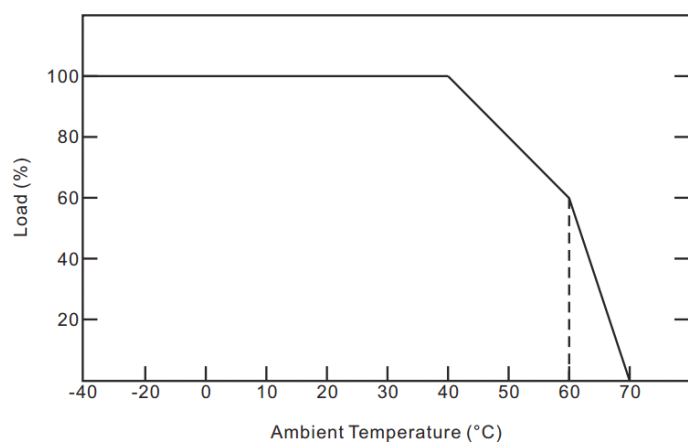
Efficiency Curve (efficiency vs output load)



Power factor curve

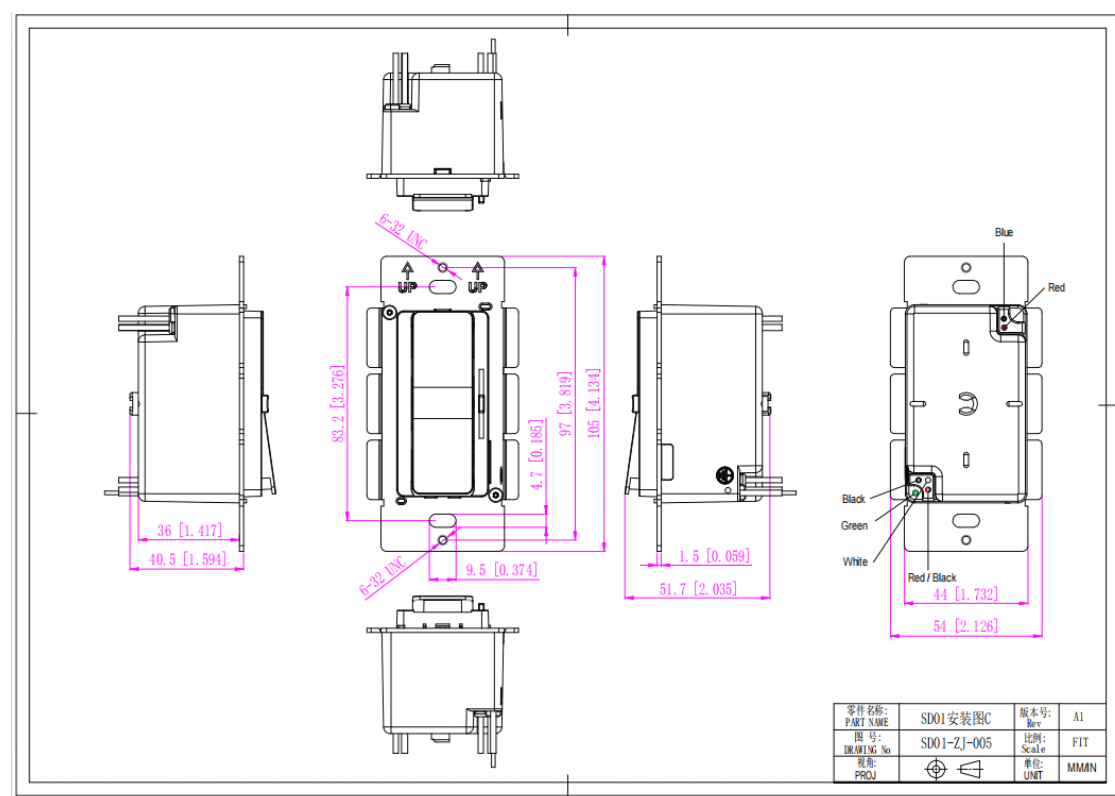


Derating Curve (Output power VS Ambient TEM P)



1. To extend their life, please refer to the Derating Curve and derate according to the temperature.
2. The output current of the LED driver should be selected according to the rated current of the lamp and the ambient temperature. Normally, we recommend the power supply to reserve a certain amount of load to extend LED driver's life.

Mechanical Specification



American Wire Gauge SD01

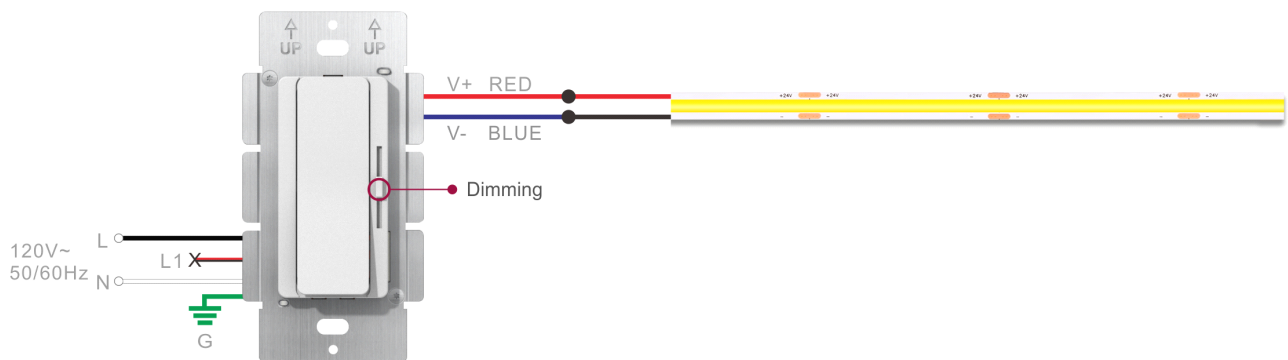
Input wires	Black cable (L), Red black cable (L1), White cable (N) and Green cable (FG) (4*18AWG)
Output wires	Red cable (V+), Blue cable (V-) (2*18AWG)

Warm tips:

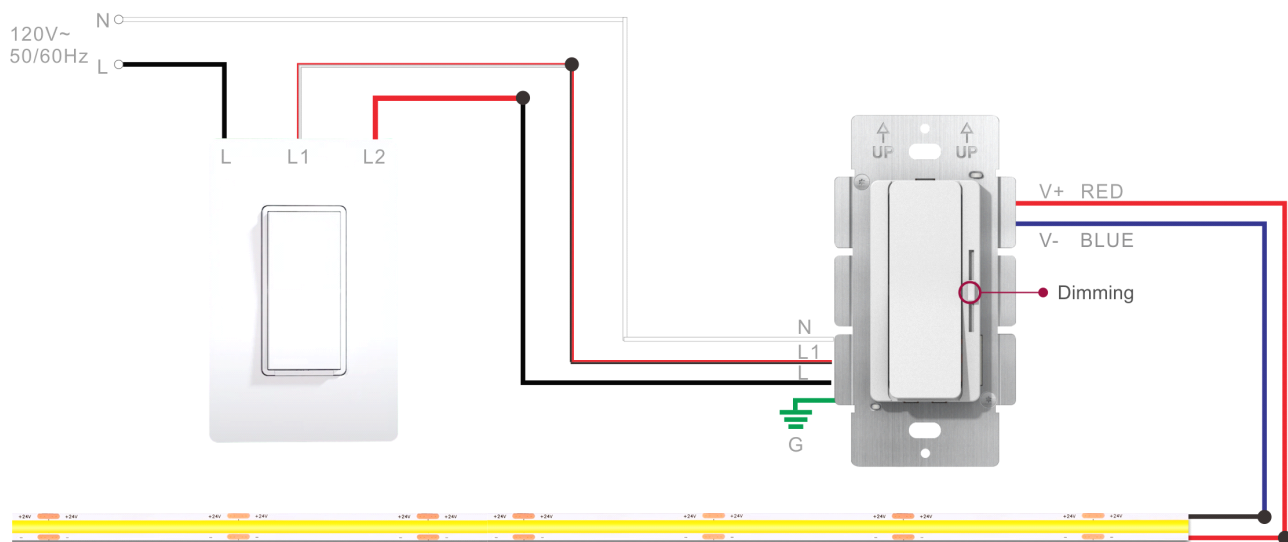
1. Any other requests, we can customize.
2. Please ensure that the connection is correct.

Connecting Diagram

① SDD-DIM model for standard dimming system



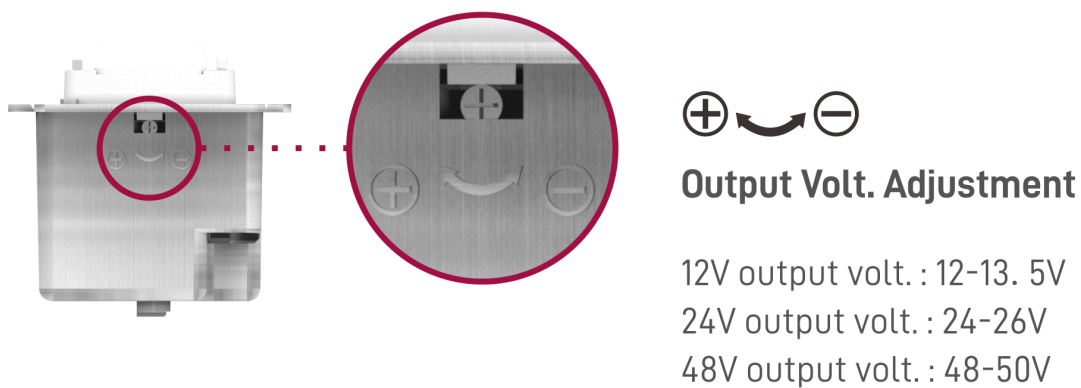
② SDD-DIM model for 3-way dimming system



Note: Dimmer's panel is not replaceable.

Knob to adjust the voltage

Clockwise rotation of the high voltage



Instructions

1. This driver+dimmer 2 in 1 should be installed by qualified and professional person.
2. Please make sure the driver+dimmer 2 in 1 is installed with adequate ventilation around it to allow for heat dissipation.
3. Ensure that connection is correct to avoid LED light or driver+dimmer 2 in 1 be damaged.
4. If the driver+dimmer 2 in 1 cannot work normally, don't maintain privately.

